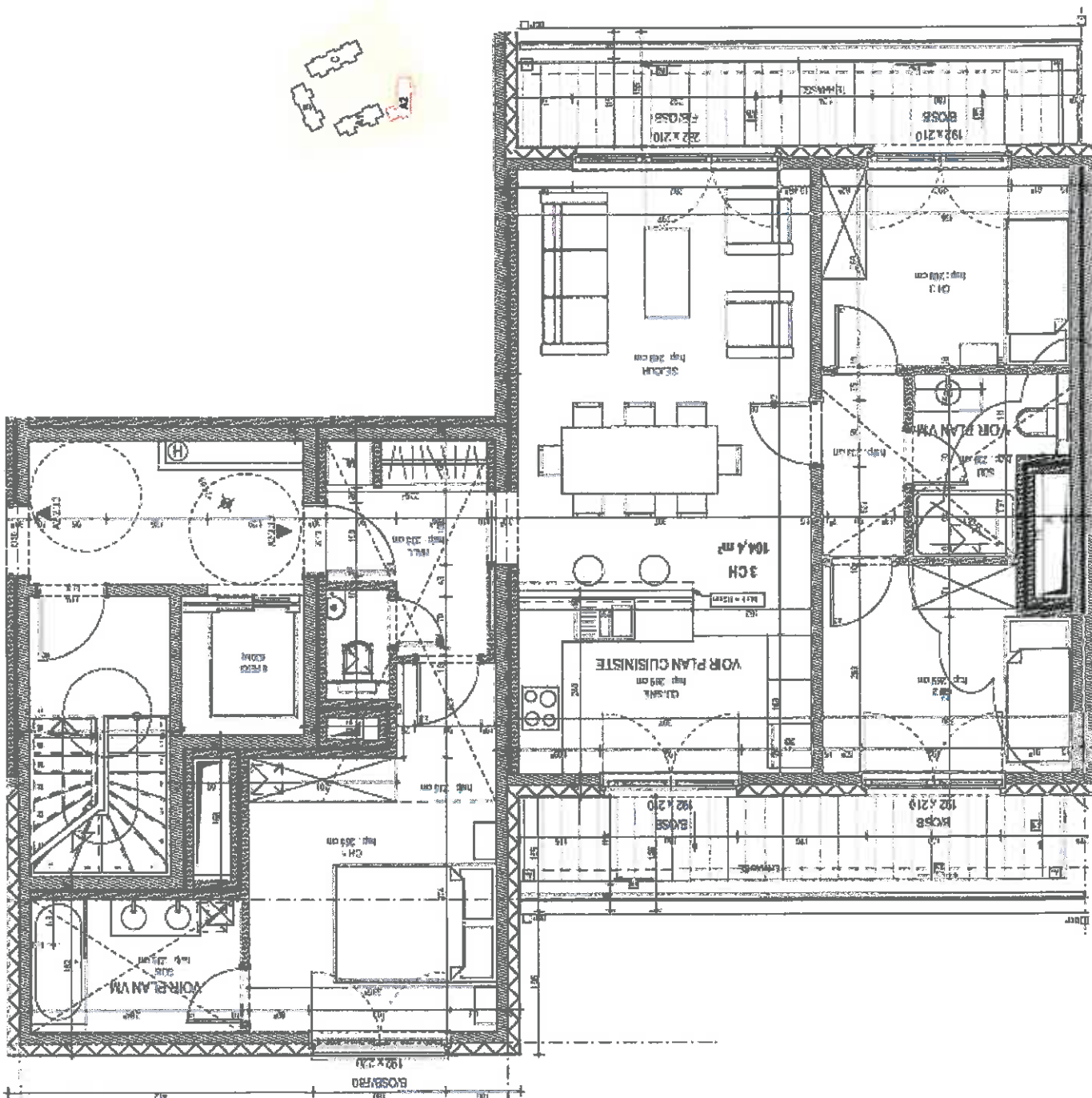
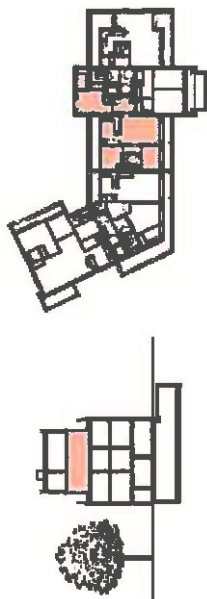


BATIMENT A2 - GEBOUW A2
APPARTEMENT A2-2.3.1

3 CHAMBRES - 3 KAMERS
3 EME ETAGE - 3 DE VERDIEPING
104,4 M2 + TERRAS(SE) 23,7 M2



INFOS ET VENTES au 02/772.80.20 ou info@sorimo.be

